



Bury Place, WC1A
£795,000, Leasehold

Anderson//Rose



Bury Place, WC1A

This is an outstanding opportunity to acquire a well-proportioned apartment set on the lower ground floor of this handsome red brick mansion block in a truly incredible location WC1A.

Comprising of a large and bright reception room, a separate kitchen that leads onto a courtyard, the principal bedroom with generous wardrobe space, a good sized second bedroom and a family bathroom.

Russell Chambers is a delightful block nestled on a quiet residential street. The building is full of history, not only because the British Museum is at the end of the road, but the block itself has a highly sought after heritage blue plaque on its facade. Both Holborn & Bloomsbury are literally on your doorstep with Tottenham Court Road and Oxford Street just a short walk down the road, with its array of world class amenities, exceptional shops, cafes and restaurants literally around the corner. You are spoilt for choice with transport, having both Holborn & Tottenham Court Road less than a 5 minute walk from your front door. Both stations provide an easy commute across the capital, including the recently opened Elizabeth Line.

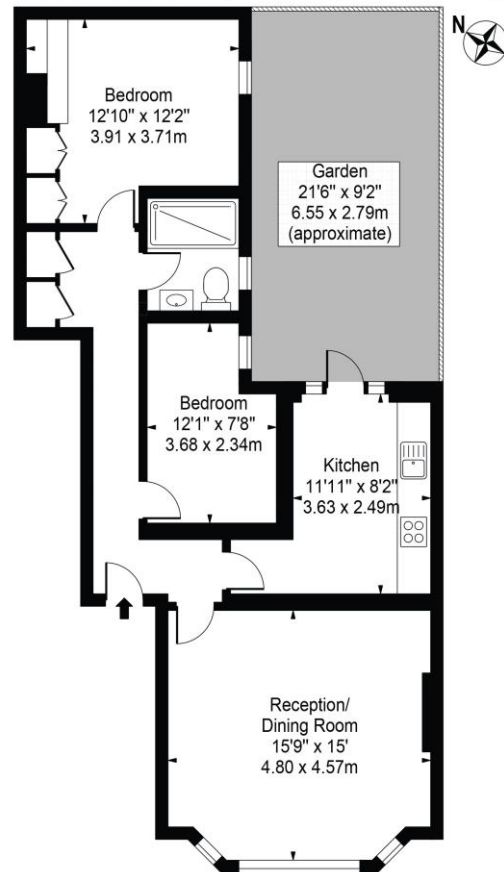
Ref PCL230005

£795,000
Leasehold



Russell Chambers

Approx. Gross Internal Area 755 Sq Ft - 70.14 Sq M



Lower Ground Floor
For Illustration Purposes Only - Not To Scale

This floor plan should be used as a general outline for guidance only and does not constitute in whole or in part an offer or contract. Any intending purchaser or lessee should satisfy themselves by inspection, searches, enquiries and full survey as to the correctness of each statement. Any areas, measurements or distances quoted are approximate and should not be used to value a property or be the basis of any sale or let.



Energy Efficiency Rating

	Current	Potential
Very energy efficient - lower running costs		
(92+) A		
(81-91) B		
(69-80) C		75
(55-68) D	57	
(39-54) E		
(21-38) F		
(1-20) G		
Not energy efficient - higher running costs		
England, Scotland & Wales		EU Directive 2002/91/EC

For clarification, we wish to inform prospective purchasers that we have prepared these sales particulars as a general guide. We have not carried out a detailed survey, nor tested the services, appliances and specific fittings. Room sizes are approximate and rounded: they are taken between internal wall surfaces and therefore include cupboards/shelves, etc. Accordingly, they should not be relied upon for carpets and furnishings. Formal notice is also given that all fixtures and fittings, carpeting, curtains/blinds and kitchen equipment, whether fitted or not, are deemed removable by the vendor unless specifically itemised within these particulars.